

REEF

notes

REEF ENVIRONMENTAL EDUCATION FOUNDATION
PROTECTING MARINE LIFE THROUGH EDUCATION, SERVICE AND RESEARCH



REEF Board of Directors

Paul H. Humann, *founder*
Marine life author
and photographer

Ned DeLoach, *founder*
President
New World Publications

James P. Dalle Pазze
Attorney: Saul, Ewing,
Remick, and Saul

Dr. James D. Bohnsack
Senior Fisheries Biologist
N.M.F.S.

Lisa A. Mitchell
Owner, Baskin in the Sun

REEF Staff

Laddie Akins
Executive Director
Key Largo, Florida

John Pitcairn
Administrative Director
Tampa, Florida

Deena Wells
Director of Operations
Key Largo, Florida

WHAT'S INSIDE:

- Fish Disease
- Jewfish Sightings
- Coral Spawning
- Wrasses
- Little Texas

Celebrate the Holidays with the National Great American Fish Count

What are you doing over the Fourth of July? Why not go diving? And while you're at it, join in the fun of fish surveying with the Great American Fish Count (GAFC). This summer, REEF is joining forces with the National Oceanic and Atmospheric Administration (NOAA), the Marine Conservation Network (MCN) and American Oceans Campaign (AOC) to focus national attention on fish surveying and marine awareness.

The GAFC, which will take place July 1-14 every year, will utilize standardized REEF methods and materials to collect sighting information throughout the US. To allow this data collection on the Pacific Coast, REEF is working with NOAA, MCN and AOC to develop Pacific survey forms, a standardized curriculum, and to modify the data management software to analyze Pacific coast data from California to Washington.

As part of the GAFC, numerous organizations will hold Introduction to Fishwatching seminars at locations throughout the country. West Coast seminars will be held in Monterey and Channel Islands Sanctuaries. Gulf of Mexico seminars will be held in Houston. Florida and Caribbean fish seminars



PHOTO: MICHAEL LAWRENCE

Get started in fish surveying with the GAFC!

will be held in Jacksonville, Tampa, Orlando, West Palm Beach, Miami and the Florida Keys. The two-hour seminars will cover basic fish identification, survey methods and materials. An underwater survey slate, color ID card, waterproof survey paper, survey report forms and national GAFC t-shirt are included in REEF-sponsored seminars.

If you've been looking for a way to start your fishwatching and surveying, this is the event to join in on. **For more information on GAFC activities and seminars, contact your regional organizer: MCN (510) 838-2544, Pacific Coast Region. Christy Pattengill (409) 779-2705, Texas Flower Gardens/Gulf of Mexico. REEF HQ (305) 451-0312, Florida/Caribbean.**

**Reef
Environmental
Education
Foundation**

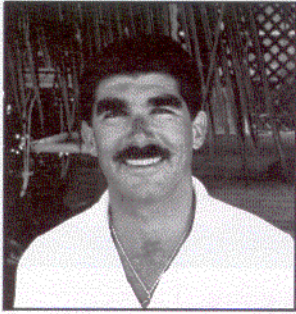
**FORWARDING & ADDRESS
CORRECTION REQUESTED**

P.O. BOX 246
KEY LARGO, FL • 33037
www.reef.org

Nonprofit Org.
US POSTAGE
PAID
Key Largo, FL
Permit No. 57



REEF Notes is printed on recycled paper.



Director's Corner

Laddie Atkins

Executive Director of REEF

Greetings from the new Key Largo REEF Visitor Center! Sorry the last newsletter didn't have a *Director's Corner*, but we ran out of space! The newly expanded REEFNotes is two pages longer and will begin to include information about Pacific Coast (California to Washington) surveying as well. Why, you might ask, will there be Pacific info. in REEFNotes? Many members up and down the Pacific asked when REEF would initiate a Pacific Fish Survey program. With the encouragement of NOAA, REEF is joining forces with existing west coast groups to enable Pacific surveying and data management. Read more in the article about the Great American Fish Count on page one.

Another great REEF happening is the benefit concert by the band Little Texas in Houston. Members of the platinum-selling Warner Brothers band have donated not only their time on a REEF Field Survey, but also their time and money to put on this concert. We should have great exposure from the event and it will be raising a substantial amount to help cover the costs of future research in the Flower Gardens. Expect to hear more about the concert on TNN, CMT and Entertainment Tonight in May and June.

Did you know that 1997 is the International Year of the Reef (IYOR)? Activities and media are focusing on issues relating to coral reefs throughout the year, and REEF is playing its part. A feature weekend at the Miami Seaquarium was held Feb 15-16, with local REEF volunteers giving informational talks about Seaquarium fish throughout the weekend. As part of our Field Surveys in June, July and August, REEF will be gathering data for the IYOR Reefcheck program. This framework of data gathering will give a world wide view of coral reefs. REEF has played an important part as member of the IYOR Florida committee, which is sponsoring a traveling display, poster contest, and other activities throughout the year.

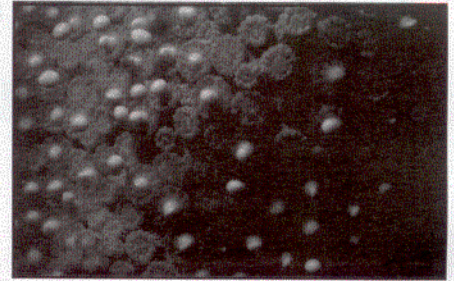
Our new website is a fantastic place to behold due to the tireless efforts of Ken Marks. Ken has also recently produced a CD-ROM on fish identification, which is available from REEF or New World Publications (800) 737-6558. This is the finest learning tool I've seen for home study of fish identification. It has everything in Paul Humann's book, plus learning and review games for any level, log entry, one thousand additional photos, and even scientific pronunciation! If you have a computer and are planning to get involved in surveying Caribbean fish, get this CD.

The 1997 schedule is out and projects are filling up quickly. American Express Dive Travel is handling all Field Survey arrangements at (800) 752-9438, but if you have specific questions, please feel free to call us anytime. Or, post a message on the website discussion area. If you are planning to join us on a Field Survey this year, get the CD!

Look for us at your local dive show this spring and fall. We will have the REEF booth and extra survey forms and materials at Seaspace in Houston (May) and Discover Diving in Atlanta (September). Stop by to say hello and swap fish stories!

Finally, I want to thank all of you who have volunteered time or made contributions recently. There are many who helped out with recent newsletter mailings, the Reef Awareness Weekend at Miami Seaquarium, and contributions from our annual appeal. Without all of you, REEF would not be here. Thank you! 🍹

Coral To Spawn During Key Largo Field Survey!



Sex on the REEF! That will be the focus of recreational divers on the nights of August 24-27 throughout the Caribbean. This once-a-year event will find divers out late at night on special trips to witness the spectacle. The Key Largo Field Survey will be taking place during the projected spawning dates. Atlantis Dive Center in Key Largo, 800-331-DIVE, will be offering special late night dives to a shallow, protected reef for those wanting to see the massive Star Corals spawn. Any members of the Key Largo Field Survey will have the opportunity to participate in these special trips. For more information on the spawning, give us a call or drop us an e-mail from the web site! 🍹

Outstanding Contributors

The following REEF members were presented with a 1996 Certificate of Outstanding Contribution, signed by President of the Board of Trustees, Paul Humann. They have given more than their share of time and commitment to making REEF an extraordinary organization.

Ed Steiner
Julie Overing
Ken Marks
Emily Schmitt
Jeff Schmitt
Glen Thiel
Laurie Wilson
Gene Dries
Brian Huff
Rebekah Moore
Brice Semmens
Christy Pattengill

Sweet Music

Friday night May 30th in Houston there is going to be a party! Fish and corals will be singing along as the Warner Bros. platinum recording band Little Texas plays a benefit concert at the Seospace dive show. The band is taking the stage in support of our marine environment, with all ticket proceeds to benefit REEF, the Flower Gardens Fund of the Gulf of Mexico Foundation and Seospace. The acoustic performance concert will also help kick off their '97 tour and celebrate the release of their latest album, *Little Texas*.

After participating in the REEF Field Survey at the Flower Gardens last August, band members Del Gray, Duane O'Brien and Dwayne Propes, all avid divers and REEF members, wanted to contribute something more to the cause of marine protection. The three members of the band have dived throughout the Caribbean. After joining the REEF survey they found their passion rekindled. "Before this, we used to swim around and look at all of the fish, but not know any of



REEF volunteers, Sanctuary personnel and Little Texas in the Flower Gardens.

their names. All of the dives just kind of ran together" says Duane O'Brien. "Now, we know the names of most of the common species and every dive is a new adventure to see what we can find. It's like your first dive all over again!"

All three organizations benefiting from the concert are non-profit groups dedicated to preserving and protecting marine resources. The Flower Gardens Fund raises money to go directly to the Flower Gardens National Marine Sanctuary. Seospace, the largest consumer dive show in the country, hosted over

10,000 people last year and all of the money raised from the show goes to provide scholarships to university students engaged in marine research. Last year over 30 scholarships were supported through the Seospace show. REEF gathers data for research on the Flower Gardens during our Field Survey Projects each year. To date we have compiled over 400 hours of data from the Flower Gardens Sanctuary and nearby Stetson Bank, which is now part of the Flower Gardens Sanctuary.

REEF is proud of Little Texas' support and membership. We look forward to more projects with the band in coming years. If your business is interested in contributing to this event by helping to sponsor the concert, many opportunities and sponsorship levels are available.

For more information contact REEF Headquarters at (305) 451-0312. For information about tickets and the Seospace dive show, please contact John Ringrose at work (713) 774-7600 or home (713) 981-5458. ♣

Ocean Fest

Ocean Fest is a new event for both divers and non-divers to be held annually in Lauderdale-By-The-Sea (LBTS), Florida. This locality is unique, being one of the only areas in Florida with a reef that is easily accessed from shore.

Ocean Fest '97 is scheduled for September 19th - 21st and is sponsored by the LBTS Chamber of Commerce and LBTS City Council. The event will combine a trade show and film festival with fun activities such as beach parties, treasure hunts and an underwater photo contest. Ocean Fest has been created with an aim to help the environment. A reef cleanup is scheduled and REEF will be planning a series of seminars as well as survey dives. We'll see you there!

For more information about OCEAN FEST '97, contact Neal Watson at (800) 327-8150. ♣

Fish Web at www.reef.org

Remember when getting caught in the web referred only to unlucky spiders? We are proudly unveiling a new interactive website just for fish! The site has been completely revamped by REEF data guru Ken Marks. What will you find there?

For the uninformed, there is a description of what REEF is all about and how to join. There is a section for quizzing yourself on some of the more common Caribbean species that even your kids will enjoy (they might even beat you!). There is also a discussion area that allows you to post questions or comments about your fish dives and read about other member's interesting sightings. REEF data is housed on the website and standard reports are available as well as lifelists and geographic reports about specific areas. Field Stations are all listed. Those

with websites, can take advantage of the site's links including those within the 1997 Field Survey schedule. There are archives of the REEFNotes newsletter to read if you are a new REEF member and want to check out past articles. You can also e-mail us directly from the website if you need new forms or have any particular questions. The site will be updated continuously with new information and articles, and the discussion area will be continually changing with new postings every day.

How do you access the site? The address is simple <http://www.reef.org>. Come join in on the fun and pay us a visit.

As Pacific Coast and Great American Fish Count data become available, we'll have a page for those as well. ♣

FISHWATCHING IN PARADISE

1997 Field Surveys continue the tradition of fun, learning and active involvement in the preservation of marine life. Each six-day Field Survey is hosted by a highly regarded local resort/dive operator and typically runs from Sunday through Friday. Wednesday is scheduled as a free day for personal exploration of the survey location. Mornings are devoted to program time including colorful slide presentations and interactive discussions on reef fish identification, fish behavior and surveying techniques. Participants undertake two survey dives each afternoon during the course of the week (for a minimum of ten dives). 1997 welcomes the return of 'Survey Only' and two Advanced Field Surveys specifically designed for prior Field Survey participants and those experienced in fish identification. Prices include 7 nights accommodations; 5 days diving; seminars & survey materials. Survey space is limited so please reserve early.

May 3 - 10 \$967.

B.V.I.

Baskin-In-The-Sun/Prospect Reef Resort

May 24 - 31 \$ t.b.a.

ST. CROIX

Survey Only • V.I. Divers/Danish Manor

June 7 - 14 \$675.

MARATHON

The Diving Site/Howard Johnson Resort

June 14 - 21 from \$865.

BONAIRE

Survey Only • Sand Dollar

June 28 - July 5 \$875.

TURKS & CAICOS

Survey Only • Dive Provo
/Turquoise Reef Resort

July 12 - 19 \$ t.b.a.

DOMINICAN REPUBLIC

Venta Diving/Club Dominicus

July 24 - 27 \$ t.b.a.

DRY TORTUGAS

Survey Only • Ultimate Getaway

August 2 - 9 \$725.

ISLAMORADA

Lady Cyana/Howard Johnson Resort

August 10 - 16 \$800.

TEXAS FLOWER GARDENS

Advanced Field Survey • M/V Spree

August 23 - 30 \$775.

KEY LARGO

Atlantis Dive Center/Marina Del Mar

September 20 - 27 \$817.

KEY WEST

Advanced Field Survey
Subtropic Dive Shop/Pelican Landing

October 11 - 18 \$1380.

ANDROS

Small Hope Bay Lodge

October 18 - 25 \$1725.

BELIZE

Wave Dancer

October 25 - Nov. 1 \$900

BIMINI

Bimini Undersea Adventures
/Bluewater Resort

FIELD STATIONS

The dive centers, resorts, boat operators, and instructors listed below demonstrate their support for REEF by volunteering as Field Stations. Each serves as a distribution point for survey forms, and actively recruits new members. Most offer beginning and advanced fish identification courses, organize survey dives, and sell related fishwatching materials. Stop in, say hello, and let them know how much you appreciate their service.

BAHAMAS

Andros Island	Small Hope Bay Lodge	809 268-2618
Bimini	Scuba Bimini	954 359-2705
Grand Bahama	International UNEXSO	809 373-1244
Nassau	Sunskiff Divers	809 362-1979
Walkers Cay	Walkers Cay Undersea Adventure	809 352-5252

BELIZE

Placencia	Rum Point Divers	501 623 239 rupe1@BTL.NET
	Soulshine Resort	800 890-6082

BONAIRE

Sand Dollar Dive & Photo	800 288-4773
--------------------------	--------------

BRITISH VIRGIN ISLANDS

Tortola	Baskin-in-the-Sun	800 233-7938 baskindive@aol.com
	Blue Water Divers	809 494-2847 bwdvbi@caribsurf.com www.ultimatebvi.com/bluewater
Virgin Gorda	Trimarine - Cuan Law Dive BVI	800 848-7078

CAYMAN ISLANDS

Cayman Brac	Brac Reef Beach Resort	800 327-3835 refz79@prodigy.com www.brac-little.com
Grand Cayman	Ocean Frontiers	800 544-6576 ocean@candw.ky

Little Cayman	Little Cayman Beach Resort	800 327-3835 refz79@prodigy.com www.littlecayman.com
---------------	----------------------------	--

HONDURAS

Roatan	M/V Isla Mia	800 874-7636 islamia@phoenix.net www.phoenix.net/~islamia/
--------	--------------	--

Utila	Rick Reno, Volunteer
-------	----------------------

JAMAICA

Reading	Poseidon Divers	809 952-3624 poseidon@infochan.com
St James		

PANAMA

Albrook AFS	Balboa Dive Club	507 272-1167
-------------	------------------	--------------

TURKS & CAICOS

Providenciales	Caicos Adventures Diving	809 941-3346
	Dive Provo	809 946-5029
	Provo Turtle Divers	809 946-4232

U. S. VIRGIN ISLANDS

St Croix	V.I. Divers	800 544-5911
----------	-------------	--------------

USA

CALIFORNIA		
San Carlos	Kinichi Au Chau Divers	415 591-9489 DivSteve@aol.com
San Ramon	Undersea Adventures	510 838-2348 mcn fish@aol.com

COLORADO

Boulder	Rocky Mountain Dive Center	303 449-8606
---------	----------------------------	--------------

FLORIDA

Ft. Lauderdale	Glen E. Thiel, Volunteer Nekton Diving Cruises	800 463-9324 800 331-DIVE captlate@reefnet.com www.pennekamp.com/atlantis/
Key Largo	Atlantis Dive Center	800 221-8717 ladycyana@aol.com 904 262-160 904 268-2417 mermaid@jax-inter.net
Islamorada	Lady Cyana Divers	904 751-4513 407 627-8280 813 585-DIVE seajs@mindspring.com www.mindspring.com
Jacksonville	Meridian Divers Inc. Mermaid Dive Guides	305 743-2437 800 327-9600 www.blackbeard-cruises.com bp@blackbeard-cruises.com
Juno Beach	Scubanauts Reef Research Team	904 656-2114
Largo	Marinelife Center of Juno Beach Sea-J's Scuba & Travel	
Marathon	FKNMS	
Miami Springs	Blackbeard Cruises	
Tallahassee	Organization for Artificial Reefs	

ILLINOIS

Chicago	John G. Shedd Aquarium	312 939-8069
Lake Zurich	Lake Michiga Scuba Center	708 546-7211

LOUISIANA

New Orleans	Oceanographic Expeditions	504 488-1573
Shreveport	Scuba Ventures	313 222-DIVE

MINNESOTA

Rochester	Minnesota Dive Center	507 288-8802
-----------	-----------------------	--------------

NEW YORK

Buffalo	Dip n' Dive	716 837-DIVE
---------	-------------	--------------

NORTH CAROLINA

Fayetteville	Aqua-Nut Dive Service Inc.	909 864-3577
--------------	----------------------------	--------------

RHODE ISLAND

Jamestown	Ocean State Scuba	800 933-DIVE
-----------	-------------------	--------------

TEXAS

Humble	W W Diving Company	713 540-1616
--------	--------------------	--------------

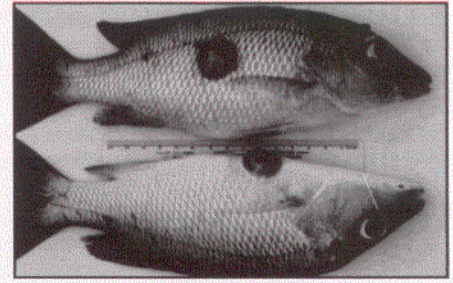
Research Team Seeks Fish Tumor Observations

A research team from Florida State University, University of Miami, and the Florida Department of Environmental Protection is studying Snapper (primarily the Gray Snapper) with skin tumors in the Florida waters. Other fish may be affected by the same disease. To date tumors have been found in several groups of fish affecting up to 5% of the fish in some locations. Most of the tumors found so far have been in the Florida Keys. The tumors range up to 2 inches in diameter. They are raised above the normal skin level and are firm to the touch. Some are covered with scales while others are open lesions.

Black spots approximately 1/4 inch in diameter or less have also been

seen with up to 65% of the fish affected in certain locations. Spots may cover as small an area as 1% or as great an area as 35% of the body. They do not appear to be raised above the skin. Preliminary assessment indicates that the spots are the result of a parasite.

Researchers are seeking any information regarding sightings of tumors and black spots in fish, especially snappers. Information requested includes: 1) Location (Loran or GPS); 2) Number and type of fish sighted with tumors or black spots; 3) Number and type of healthy fish in the general vicinity of the fish with tumors or black spots; 4) Water depth; 5) Water temperature; (6) Any other notes or relevant information and



Gray Snapper showing skin tumors.

(7) Your name and phone number. The survey team may contact you for further information and/or to visit the site for further evaluations.

Contact Dr. Robert Werner, 101 Biomedical Research Facility, Florida State University, Tallahassee, FL 32306-2016 (904-644-4262) Email: rwerner@res.fsu.edu.

Scholarship Opportunities

REEF receives a number of requests each year for information about possible internships or scholarships. Although we do not offer either of these, we do know of a few great opportunities that are available. Our World Underwater is a non-profit consumer dive show held each spring in Chicago. The purpose of the show is to raise money providing scholarships relating to the marine environment. One scholar is chosen each year to visit and work with various marine related experts around the world. The contacts and experiences gained during this year are incredible. The OWU society also spon-

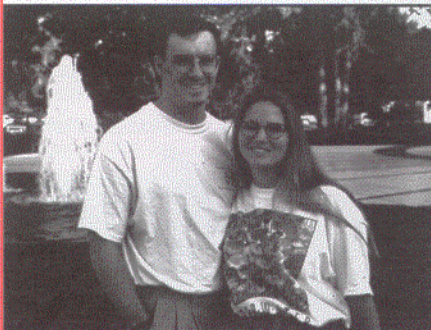


Rebekah Moore, OWU Associate Scholar, 1996.

sors a small number of associate scholarships that are matched with marine related organizations, such as REEF, for summer internships. REEF was honored to have Rebekah Moore as an Associate Scholar last summer. Hailing from California, Rebekah hadn't spent much time in Florida waters prior to her work with REEF. Her summer was filled with various duties (many of them in the office), but she was also able to participate in all four Florida Keys Field Surveys and numerous other survey dives while she was here. She rapidly became an expert level surveyor and was a great asset to the REEF team. For more information about the OWU schol-

arship and application contact OWU, P.O. Box 4428, Chicago, IL, 60608.

The Seaspace Dive show is another non-profit show dedicated to providing scholarships. Seaspace, the country's largest consumer show, takes place in Houston every June. Seaspace scholarships are primarily applied towards research taking place in Gulf of Mexico waters. Christy Pattengill, one of REEF's founding researchers, is a past recipient of a Seaspace scholarship. The scholarship enabled her to conduct her groundbreaking fish census work in the Flower Gardens National Marine Sanctuary and Stetson Bank. As a result of her work, she provided the most extensive species list ever compiled for Stetson Bank, and she is finishing her thesis on Flower Gardens fish assemblages this year. Last year, Seaspace provided over 30 graduate scholarships to students in Texas, Louisiana, Mississippi, Georgia and Florida. For more information, contact Seaspace at P.O. Box 3753, Houston, TX, 77253-3753.



Brice Semmens and Christy Pattengill, Flower Gardens Volunteers of the Year and Seaspace scholar.

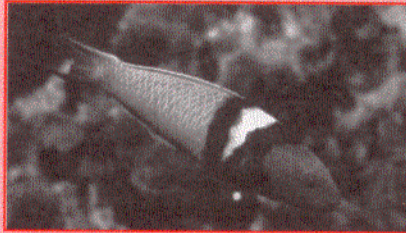
YOU BET YOUR... WRASSES BY LADDIE AKINS

Of all the numerous small fish found on Caribbean reefs, none may be more numerous than the 2-5" wrasses. The terminal phases are usually very easy to tell apart, but they represent the minority when you compare them to all of the adults and juveniles swarming the reef. Of the many species of small Wrasses, the Bluehead, Yellowhead Wrasse and Clown Wrasse are most frequently sighted.

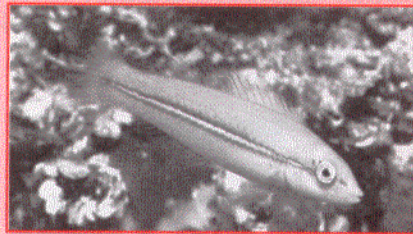
Blueheads and Yellowhead juveniles may look very similar at first glance, but distinct markings on



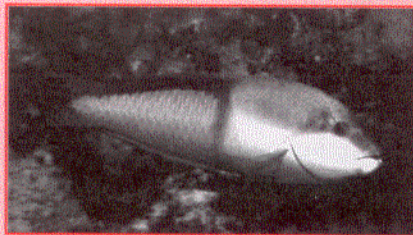
BLUEHEAD - JUVENILE



BLUEHEAD - TERMINAL



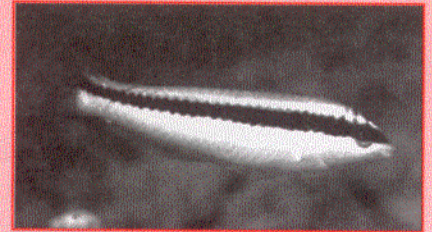
YELLOWHEAD - JUVENILE



YELLOWHEAD - TERMINAL

both allow an easy ID. In the juvenile stage, Yellowhead Wrasse have a prominent blue stripe through the middle of the body, beginning just behind the head. The rest of the fish is completely yellow. Blueheads, in contrast, have no blue stripe. The entire body is yellow with only a single black spot on the fore dorsal fin. Even though they are both small and yellow, these two can be easily told apart by the respective markings.

The Clown Wrasse actually carries a bit of the adult's markings- even as a juvenile. Brown markings across the head of the Clown juvenile resemble the same painted face of the adult. Quite often, these markings are accompanied by a bronze colored dorsal region above the dark lateral line stripe. Both Yellowhead and Bluehead are often found over the top of the reef, looking for plankton or acting as cleaners. The Clown Wrasse is almost always found nearer the bottom, looking for small invertebrates to satisfy its appetite.



CLOWN WRASSE - JUVENILE



CLOWN WRASSE - TERMINAL

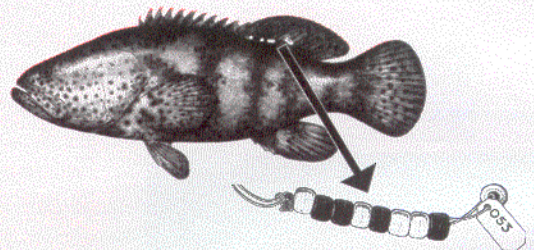
Jewfish Identification

Identification of large groupers can sometimes be confusing and many novices report any large grouper as a Jewfish. How can you be sure the gigantic grouper you are looking at is definitely a Jewfish? Two keys stand out. The Jewfish is the only Caribbean grouper with black and white (salt and pepper) spots sprinkled over its body. These spots are most prominent on the head. Jewfish are also the only large grouper with a round tail. Many fisheries management groups are very interested in using our Jewfish sightings, so be sure your ID is accurate! 📌



Jewfish can live to be over 100 years old!

HAVE YOU SEEN THIS FISH?



We need your help in locating juvenile or adult Jewfish. If you see a tagged or untagged fish please call:

1-800-367-4461
Department of Environmental
Protection Tagging Hotline

904-234-6541 (call collect)
National Marine Fisheries
Service, Panama City

We need the following information: Your name, address, and phone number; fish's location, depth & date seen; fish's estimated total length; the pattern is read from the fish out (Do Not Remove Tag).

CONTRIBUTORS 1996/97

The following members have generously donated \$30 or more, as of May 1, 1997. REEF continues to maintain a "no fee" membership policy, in large part, because of the voluntary financial support from the members listed below. REEF is a 501 (c)(3) nonprofit corporation. As such, all contributions are tax deductible. Any contribution you make will be greatly appreciated and go a long way toward continuing our work. Please mail your contribution to REEF, P.O. Box 246, Key Largo, FL 33037.

SUSTAINERS CLUB

(\$1,000-plus)

Ken Deaver
Ned & Anna DeLoach
Ole Peloso
Tom Isgar
Edwin Steiner

\$250 +

Nancy Betts
Walter Briney
Lisa Diaz
Jeffrey Nehms
Philip & Julie Rosenfeld
Joseph Schittone
Barbara Schmitt

\$50 +

Dean Birmingham
Richard Blankfein
Joseph & Filomena Cardinale
Wendy Cartwright
Sal D'Alessio
Dennis Day
Judith Dean
Helnke Fields
Bob Fiorentino
Virginia Harr
Terri Kelly
Carol Lorenz
Donna Marchetti
Gary Mominee

Beverly Murdock
John Phipps
Joe Pomento
Jeffrey Porter
David Preston
Carmyn Prieue
Gail Redden
Eric & Nanette Riesch
Angel Rodriguez
Douglas & Jane Rorex
Ben & Betsy Saunders
Carol Skinner
Sue Steinmann
Claudia Stingle
Chris Toedt

\$100 +

Dana Africa
Cynthia Aiello
Kate Archey
Patricia Ayers
Barbara Baucom
Robert & Barbara Bean
Rebecca Bell
Bob & Connie Bishop
James Bohnsack
Allen Boorstein
Judy Brown
John & Cynthia Burdakin
Helga Burrell-Sahl
Don Buswell-Charkow
Karen Campbell
John Casson
Jo Caulfield
Bev Chadwell
Andrew Chesson
Nettie Dean
Edwin Douglas
Shizue Douglas
Walter Dragus
Muns Forestad
Wydell Feazell
Steven Feldman
Jackie & Anthony Foster
Harris Friedberg

Lee & Lea Fulmer
Ansbert Gadick
Richard Gamble
Karen Garcia
Lennis Gilliam
Stephen Golden
Charles Goldfarb
Charles Gray
Seymour & Corinne Halberg
Melinda Haslam
Matthew Helmrich
Richard & Brenda Hitt
Margaret Hornbaker
Paul Hutley
P.Hampton Hylton
International Scuba Tours
Fred Immerman
Debra Johnston
Shaz Kahng
Robert & Jean Kirkpatrick
Ed Kittrell
Jared Klein
Vilma Kohn
Ann Mattson
Mel McCombie
Bill & Phyllis Meisenheimer
Carl & Nancy Miller
Katherine Miller

Jim Morabito
David & Patricia Orr
Mr & Mrs Robert Ottens
Pat Pachuta
John Peebles
Gina Razete
Elliot Ross
Linda Schillinger
Ruth Seber
Kim Selkoe
Sheryl Shea
Rowena Sim
John & Laura Smith
Tom Stephenson
John & Bonnie Strand
John Stuart
Maureen Sweeney
Janice Sutherland
Abran Tamayo
Mike Taylor
Julianne Tracy
Julius Violaris
Todd Vogel
Sharon Wander
Neil Webber
David & Susan Welch
Jodi Williamson
Ellen Wood
Janice Workman

\$30 +

John Adler
Scott Baker
Darren Brode
Claire Bronson
Lisa Lewis Bullock
Robert Burnett
Kristina Caylor
William Crowley
Andrea Desmond
Robert Dixon

Vickie Ellett
Eldon Evans
Susan Finley
Alan Fischl
Lloyd Gelman
Robert Ginsburg
Stephan Gregory
Hollie Hailstone
Ray Harrington
Fred Hartner

Bradley Holmes
David Holub
Frances Schlingemann-Hovig
William Howell
Rita Jones
Carin Khatchikian
David & Doris Krumholz
Kyle Lane
Donald MacDougall
Cecily Majerus

Susan Parker Martin
John G. Mosier Jr.
David Mulvey
Carolina Nurik
Christopher Palasky
Lisa Peloso
Mark Reichert
Marcia Russo
Keith & Linda Sawade
Emma Schwarz

Julie Sealey
Bill Silliman
Richard Stone
Laura Pivacco Thompson
Edgar & Gail Tomei
Christopher Trouth
Carolann Turn
Lelia Vaughan
Jackie Wallace
Dick Zingula

REEF Volunteers Approach 10,000 Surveys

Surveys returned: **8,667**

Sites surveyed: **897**

Species seen: Novice - **450**;
Expert - **369**

Total bottom time on survey
dives: **11,231** hrs.

These members have completed at least 20 surveys:

Over 100 surveys
Laddie Akins - 378
Deena Wells - 235
Emily Schmitt - 203
John Pitcairn - 181
Clive Petrovic - 171
Ann Aikins - 156
Julie Overing - 130

50 - 99 surveys
Jean Kirkpatrick - 85
Sheryl Shea - 82
Elaine Morden - 72
Linda Schillinger - 72
Jean Gasen - 68
Barb Modafari - 66
Pamela Cefaratti - 62
Carol Reichert - 61
Jim Modafari - 61
Joe Thomas - 59
David Mulvey - 53
Cathy Coughlin - 52
Chuck Jirka - 52
Bob Bishop - 52
Rob Antonelli - 51
Betsy Saunders - 51
Jonathon Tromm - 51

20 - 49 surveys
Dave Downs - 49
Cristi Korbeck - 46
David Mulvey - 53
Kathleen Scott - 44
Ken Deaver - 44
Jim Morabito - 42
Norreen Downs - 40
Glen Theil - 40
Anna DeLoach - 38
Walter Briney - 37
Robert Winters - 37
Denny Lutz - 37
Greg Bunch - 37
Tony Sebastian - 37
Lynn Hubert - 34

Connie Dolan - 34
Sally Thomas - 33
Gail Tomei - 32
Brice Semmens - 31
Doug Rorex - 31
Todd Aikins - 31
Connie Bishop - 31
Shelly Tyre - 31
Karen Garcia - 30
Eric Reisch - 30
Ed Tomei - 30
Wade Bevier - 30
Leslie Carles - 29
James Brooke - 29
Randy Kiel - 29
Anthony Kajfez - 29

Jerry Ligon - 28
Jonathon Edwards - 28
Roxanne Chavanne - 27
Trex Thomas - 26
Richard Hitt - 26
Monica Vega - 26
Pete Wyman - 26
Curry Randall - 26
Rebekah Moore - 26
Claudia Campos - 26
Jessica Lorek - 25
Patricia Ayers - 25
Christy Pattengill - 25
Brenda Hitt - 24
Cheri Arnold - 24
John Casson - 24

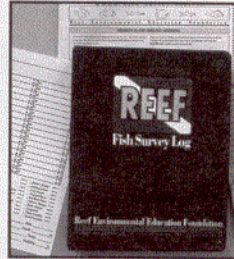
Monty Doyle - 24
Shawn Edwards - 24
Cindy Helm - 24
Don Peck - 24
Darren Brode - 23
Janet Earnshaw - 23
Bill Silliman - 23
Robert Grist - 23
Freddy Bellise - 22
HC Young - 22
Celeste Presperin - 22
Peter Rennemann - 21
Van Duncan - 21
Corinne Halberg - 20
Ken Marks - 20



REEF Gear

REEF TEE SHIRTS: Proudly show your support of the underwater world every time you wear one of our REEF shirts. The back of each 100% cotton shirt displays the REEF logo underscored by the "We Speak Fish" banner, the front reads "Reef Environmental Education Foundation." Tees: M, L, XL \$15.00

REEF DELUXE SURVEY KIT: Be prepared! The REEF Deluxe Survey Kit contains everything you need to conduct and record fish surveys: three ring logbook, REEF underwater slate, waterproof fish I.D. card, 24 underwater I.D. sheets, and 12 REEF Marine Wildlife Survey scansheets. Printed with the names of 30 of the most common fishes found in Florida, the Bahamas, and the Caribbean basin, 70 spaces for write in identifications, and complete survey site and dive information, the underwater I.D. sheets are specially designed to fit over the underwater slate for surveying. Post-dive they fit into the logbook to provide a permanent record of each dive. A dream come true for every REEF member. \$30.00



REEF CAP: Keep the sun out of your eyes in between dives with our REEF cap. The red, gold and black REEF logo is embroidered on a black baseball hat with black braid detail. One size fits all. \$15.00

ORDER INFORMATION

____ T-shirts @ \$15.00: \$ _____
____ Survey Kits @ \$30.00: \$ _____
____ Hats @ \$15.00: \$ _____
Florida residents add: Sales Tax 7.5% \$ _____
\$ _____

MAIL TO:
R.E.E.F.
P.O. Box 246
Key Largo, FL 33037

Add \$3.50 Shipping & Handling (plus \$1. each additional item)

Total: \$ _____

Name: _____

Address: _____

I want to help REEF with its 1997 urgent coral reef preservation program! Please put my tax-deductible contribution to immediate use to extend your fine program to more areas to save the reefs we love.

\$20 \$30 \$100 \$Other _____ \$1,000 Sustainers Club

Make your check payable to REEF. Your contribution is tax-deductible.

NAME: _____

ADDRESS: _____

CITY _____ STATE _____ ZIP _____

Please provide us with your name and address for record keeping purposes.

My check is enclosed. Please charge my VISA M/C Discover

ACCT. NBR.: _____ EXP. DATE: _____

SIGNATURE _____ PHONE NBR.: _____

REEF: P.O. BOX 246 • KEY LARGO, FL 33037

REEF Team Takes an Early Look at the Capt. Keith Tibbetts

by John E. Pitcairn

The recent slew of articles about the frigate M.V. Capt. Keith Tibbetts have made the Russian-built frigate a world-famous wreck dive and deservedly so. It is also already a fascinating fish-watching dive that will only get better. In November, 1996, an invitation was extended to REEF by the Brac Reef and Little Cayman Beach Resorts to bring our volunteer fish monitoring project out to Cayman Brac and Little Cayman. We were excited at the opportunity to expand our work to the renowned Sister Islands and to begin a monitoring program on the Tibbetts at this early stage in its life as an artificial reef. During almost four hours of survey time spent on this 338-ft. vessel, we observed a total of 60 species of fishes. From Black Grouper to Blackfin Snapper, Rusty Goby to Rosy Razorfish, Redlip Blenny to Red Night Shrimp, this massive structure already plays home to a variety of creatures. To continue this monitoring project, REEF has scheduled an initial Field Survey at Little Cayman Beach Resort for October 4th to 11th of this year. The **Little Cayman Field Survey** will combine a week of interactive slide presentations on reef fish identification, behavior, and surveying with at least two survey dives each day at one of the world's most renowned dive destinations. And, of course, we'll motor over to the Brac for at least one dive on the M.V. Capt. Keith Tibbetts.

Space is limited! Call Vickie Stilwell at (800) 327-3835 or (813) 323-8727 for more information. Finally, REEF would like to pass on a sincere "Thank You" to Dan Tibbetts and Vickie Stilwell of the Cayman Brac and Little Cayman Beach Resorts for making REEF's work in the Sister Islands possible; to Cayman Airways for getting us there (and back!); and to the professional and fun-loving Reef Divers staff at both resorts. See you all in October! 🇧🇪